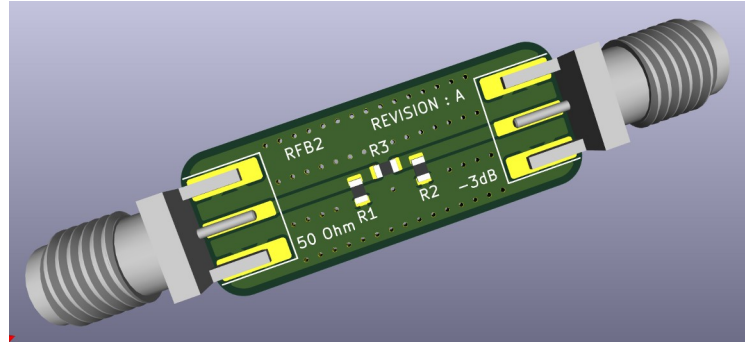


## Description

The RFB2 is an attenuator designed to aid in RF testing particularly for calibration of jigs, cables etc. It is particularly useful for reducing the signal strength of WiFi, GSM, Bluetooth, LORA etc. when testing low signal strength scenarios.



## Technical Info

### Connector

SMA Female to SMA Female

### PCB

PCB Thickness : nominal 0.8mm (31.5 mils)

PCB Material : FR4

PCB Finish : 35um ENIG (Gold Surface)

### Characteristics

Nominal impedance : 50Ω

Frequency Range : 100KHz..3.0GHz

Attenuation : 3dB

Max Signal Input : +20dBm

